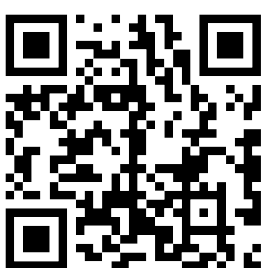


GJS-IV-9012 Fiber Optical Splice Closure Specifications

Version:1.0



Official website



Technical specification



Installation guide



Download CN ver

GJS-IV-9012 type fiber optic splice closure specifications

GJS-IV-9012 type Hafur-nut sealed cable joint box, using an innovative circular circular clamshell Hafur-type structure design, the overall use of a small amount Spring fixed seal. The cable inlet and outlet holes are designed with nut seal structure, and the cable inlet and outlet are selected according to the diameter of the cable The hole sealing ring can be used to seal the optical cable by automatically shrinking and holding the optical cable by rotating the locking nut elastomer sealing ring. The main of the product The function is to provide non-cutting straight-through + splicing and splicing + splicing and branch splicing protection for various types of optical cables in the optical transmission link Protect. The shell of the product is made of modified PC engineering plastic, which has good physical and chemical properties and is suitable for overhead and wall mounting.



Reliable sealing

The upper and lower shell of the cable connector box adopts a reliable elastomer sealing component, and the optical cable inlet and outlet holes are mechanically sealed by clamping the sealing ring with nuts, and the protection level reaches above IP68. The cable inlet and outlet holes of the connector box have different specifications of sealing rings to choose from, which can meet the different diameters of the cable inlet and outlet sealing, and the sealing performance of the product is good.



Modular design

The welding disc is designed with a fast superposition structure and can be increased or decreased according to the capacity The number of welding disks.

Optical fibers with loose sleeves can be coiled and stored.

The bending radius of the optical fibers is greater than 30mm.

Powerful Features

Support cable splitting, docking and welding.

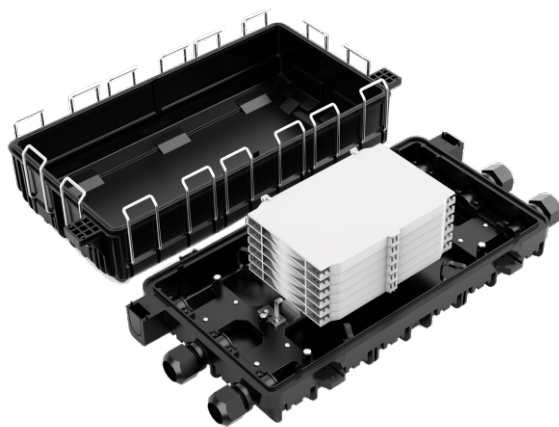
Can be aerial, wall hanging installation.

The metal parts in the connector box can be grounded through the grounding device and grounding cable.

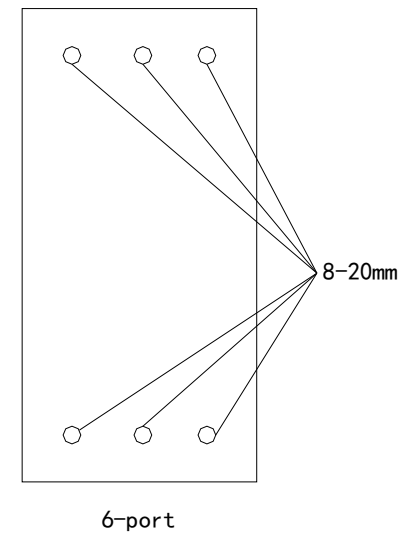
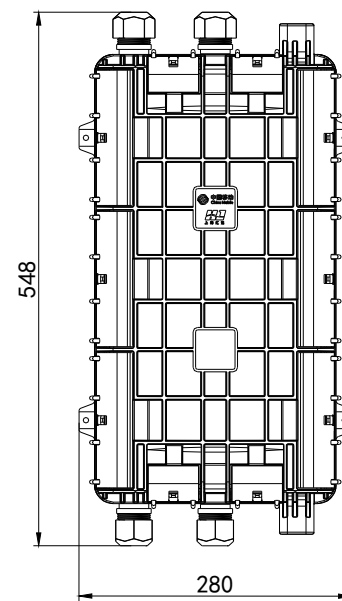
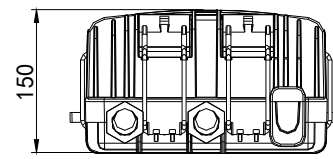
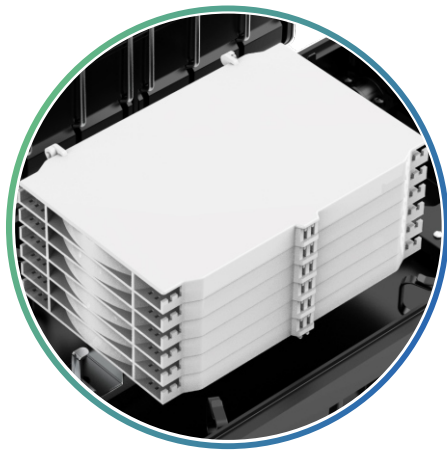
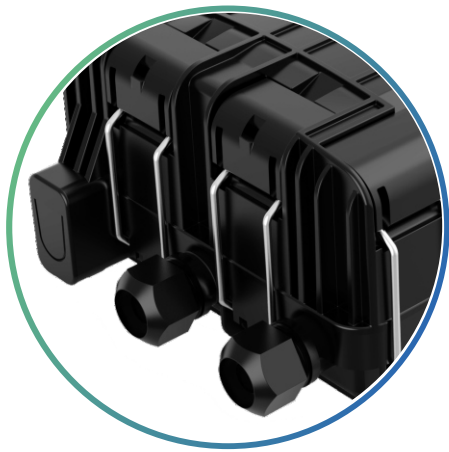
Excellent practicabilit

The shell of the joint box is made of modified PC material, and the internal metal parts are made of 304 stainless steel Materials are produced that can meet a service life of more than 25 years (depending on the environment), with It has good impact and corrosion resistance.

If necessary, the fitting box can also be fitted with a valve nozzle for the tightness test of the fitting box.



GJS-IV-9012 type fiber optic splice closure specifications



Product specifications	Splicing tray A	Splicing tray B	Splicing tray C	Splicing tray D
Maximum capacity	144 cores	216 cores	168 cores	144 cores
Capacity of each splice tray	12-24 core/tray	12-24 core/tray	12-24 core/tray	12-24 core/tray
Maximum number of splice trays	max 6 pcs	max 9 pcs	max 7 pcs	max 6 pcs
Number of optical cable entrance and exit tubes	4 main cable ports			

Ordering Guide



Product number
GJS-IV-9012



Product size
548*280*150mm



Product weight
5.05kg



Qty/CTN
4 set



Inner carton size
565*285*160mm



Outer carton size
585*305*665mm

Accessories information

Standard accessories

1. Labeling paper		6. Nylon tie	
2. Hanging hook		7. Desiccant	
3. Abrasive cloth		8. Special wrench	
4. Heat shrinkable protective sleeve		9. Earthing wire	
5. Installation tape			


Optional accessories

1. Pressure testing valve		3. Buffer tube for bunchy fiber	
2. Earthing deriving device			

To the future together.

 www.ztong.com

 info@ztong.com

 Tel:86-0574-62498928

 Ningbo Zhantong Telecom Equipment Co.,Ltd.

 Fumin Industrial Zone,Moushan,Yuyao City,Zhejiang,China