

# GJS-III-6020 Fiber Optical Splice Closure Specifications

Version:1.0



Official website



Technical specification



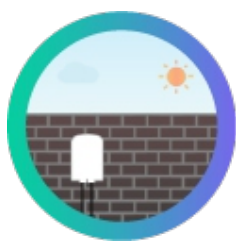
Installation guide



Download CN ver

# GJS-III-6020 type fiber optic splice closure specifications

GJS-III-6020 Hafu-type tape sealed cable connector box adopts innovative circular Hafu-type split structure design, and multiple screws are fixed and sealed around the shell. The optical cable access holes are sealed by mechanical tape. Select the appropriate optical cable access holes according to the diameter of the optical cable access holes. Wrap the sealing tape and install it in the corresponding access holes to seal the optical cable. The main function of this product is in light transmission. In the transmission link, it provides continuous protection for various types of optical cable without cutting through + split and splicing + split and branch joint. The shell of the product is made of modified PP engineering plastic, which has good physical and chemical properties, and is suitable for overhead, pole, wall hanging, hand hole, pipeline installation and use.



## Reliable sealing

The upper and lower shells of the optical cable joint box are sealed with reliable elastic components, and the optical cable inlet and outlet holes are mechanically sealed by winding sealing tape, with a protection level of IP68 or above. The optical cable inlet and outlet holes of the junction box have different specifications of aperture to choose from, which can meet the sealing requirements of optical cables with different diameters. The sealing performance of the product is good.

## Modular design

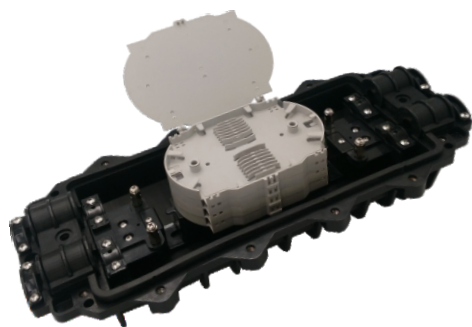
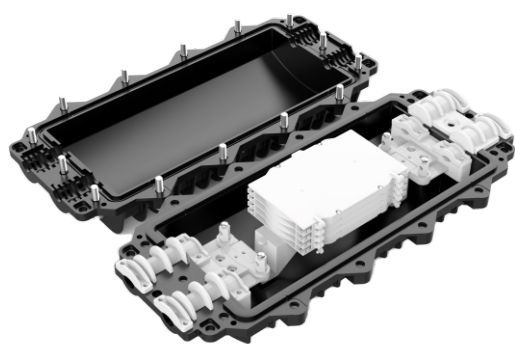
The welding disc adopts a fast stacking structure design, which can increase or decrease the number of welding discs according to the capacity. The bottom of the box supports fiber optic coil storage with loose sleeves, and the bending radius of the fiber optic is greater than 30mm.

## Powerful Features

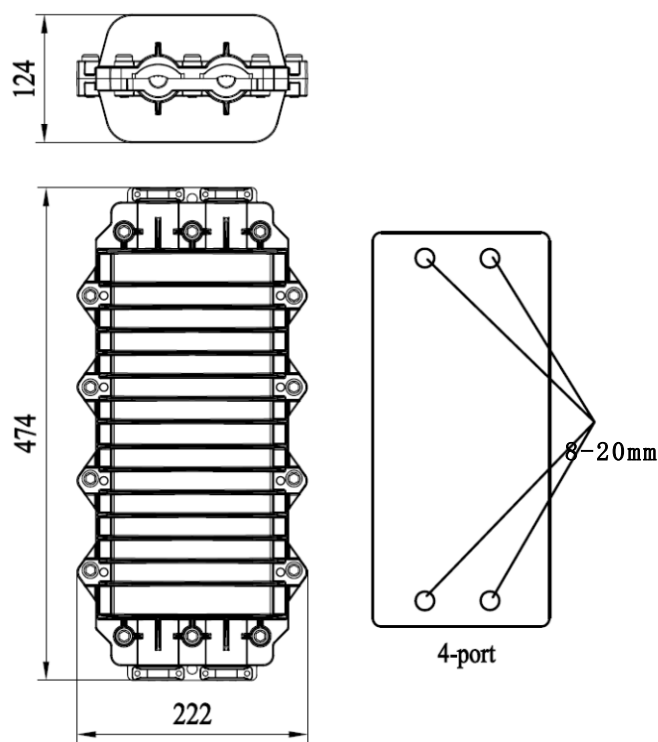
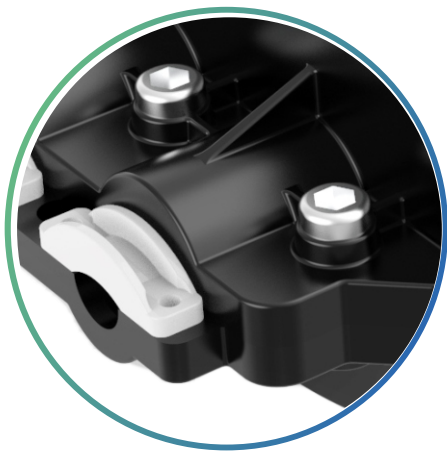
Support the direct connection, branching, docking, and fusion of optical cables. Can be installed overhead, wall mounted, pole supported, or directly buried. By using grounding devices and grounding wires, support the grounding of metal components inside the junction box.

## Excellent practicability

The joint box shell is made of modified PP material, and the internal metal parts are made of 304 stainless steel material, which can meet a service life of more than 25 years (depending on the environment) and has good impact and corrosion resistance characteristics. If necessary, the connector box can also be equipped with a valve for air tightness testing.



# GJS-III-6020 type fiber optic splice closure specifications



Product specifications	Splicing tray A	Splicing tray B	Splicing tray C	Splicing tray D
Maximum capacity	96 cores	144 cores	144 cores	96 cores
Capacity of each splice tray	12-24 core/tray	12-24 core/tray	12-24 core/tray	12-24 core/tray
Maximum number of splice trays	max 4 pcs	max 6 pcs	max6 pcs	max 4 pcs
Number of optical cable entrance and exit tubes	4 main cable ports			

## Ordering Guide



Product number  
GJS-III-6020



Product size  
474\*222\*124mm



Product weight  
3.1kg



Qty/CTN  
8 set



Inner carton size  
485\*230\*130mm



Outer carton size  
500\*476\*560mm

## Accessories information

### Standard accessories

1.Labeling paper		7.Earthing wire	
2. Installation tape		8.Seal tape	
3.Abrasive cloth		9.Hexagonal wrench	
4. Heat shrinkable protective sleeve		10. Measuring paper	
5.Nylon tie		11. Hanging hook	
6.Desiccant			

### Optional accessories

1. Pressure testing valve		4.Pole mounting	
2. Earthing deriving device		5.Wall mounting kit	
3. Buffer tube for bunchy fiber		6. Buffer tube for ribbon fiber	

# To the future together.



[www.ztong.com](http://www.ztong.com)



[info@ztong.com](mailto:info@ztong.com)



Tel:86-0574-62498928



Ningbo Zhantong Telecom Equipment Co.,Ltd.



Fumin Industrial Zone,Moushan,Yuyao City,Zhejiang,China