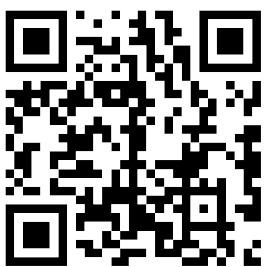
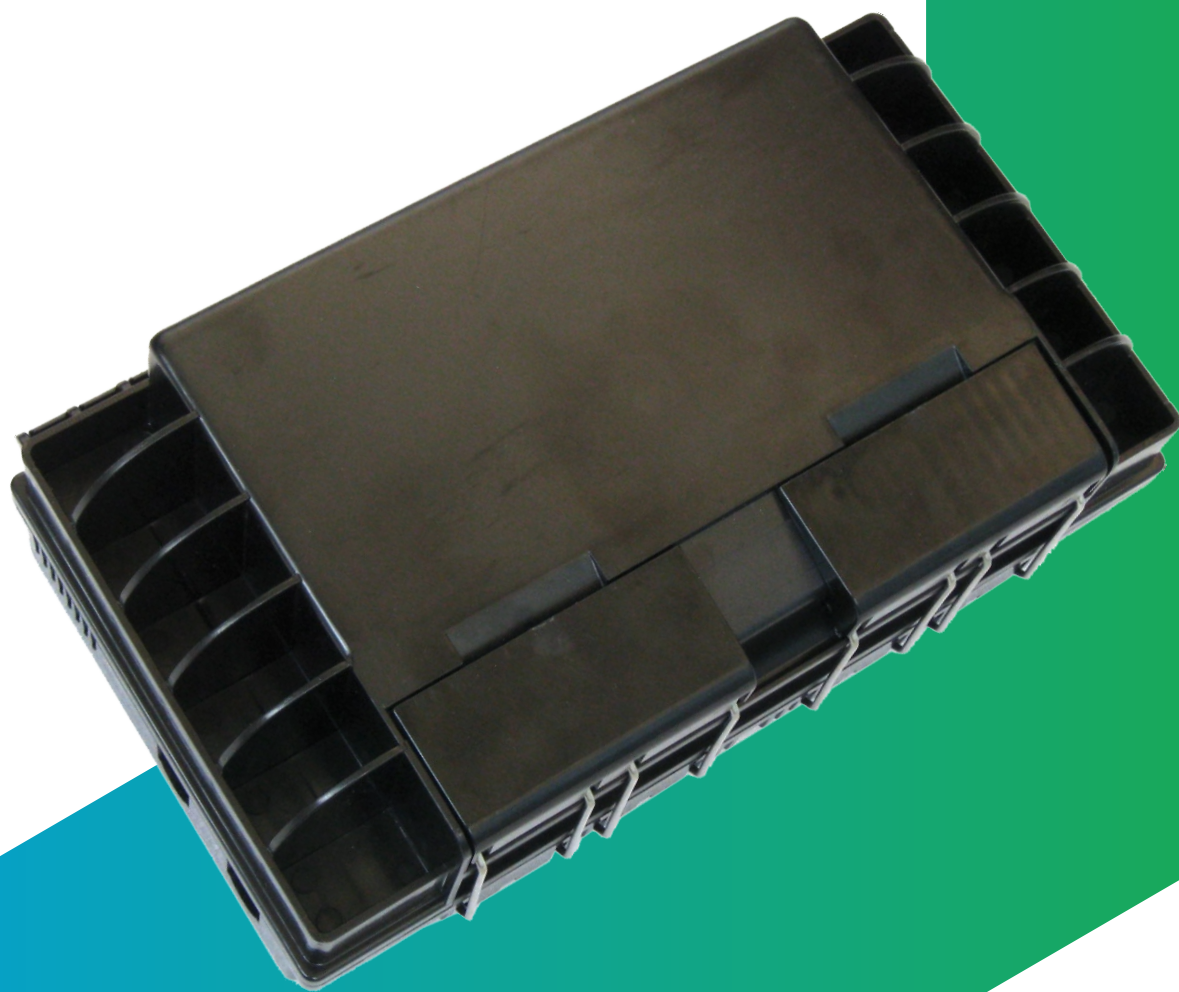


GJS-III-2019 Fiber Optical Splice Closure Specifications

Version:1.0



Official website



Technical specification



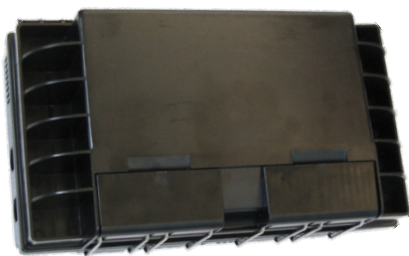
Installation guide



Download CN ver

GJS-III-2019 type fiber optic splice closure specifications

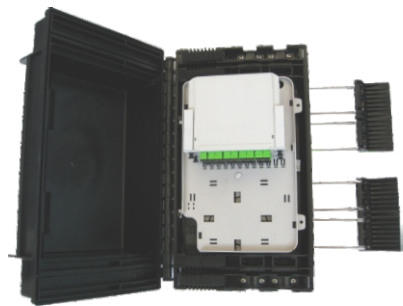
GJS-III-2019 optical fiber distribution cable connector box is used in terminal access link of FTTH optical fiber to household access system. It is an ideal supporting equipment for wiring between optical nodes and terminal devices in optical fiber transmission network. It has the function of flexible scheduling of optical fiber storage, optical splitting and wiring, and is suitable for outdoor overhead and wall mounting installation. 2 pcs 1:8 or 1 pc 1:16 micro-optical splitters can be installed according to needs, with a maximum capacity of 48 cores, and a maximum of 4 main optical cables and 16 leather optical cables can be accessed.



Reliable sealing

The connector box shell and cable inlet and outlet holes are mechanically sealed with reliable TPE elastomer seals, and the protection level is above Ip65.

Optical cable inlet and outlet sealing ring can meet the different diameters of optical cable inlet and outlet sealing, the product sealing performance is good.



Modular design

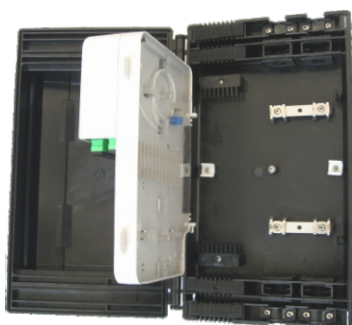
The welding area and the splitter wiring area are separated independently, and the route is clearer.

Optical fibers with loose sleeves can be coiled and stored. The bending radius of the optical fibers is greater than 30mm.

Powerful Features

Support optical cable welding, splitting, wiring, splitting, docking and through inventory.

Can be aerial, wall hanging, holding pole installation

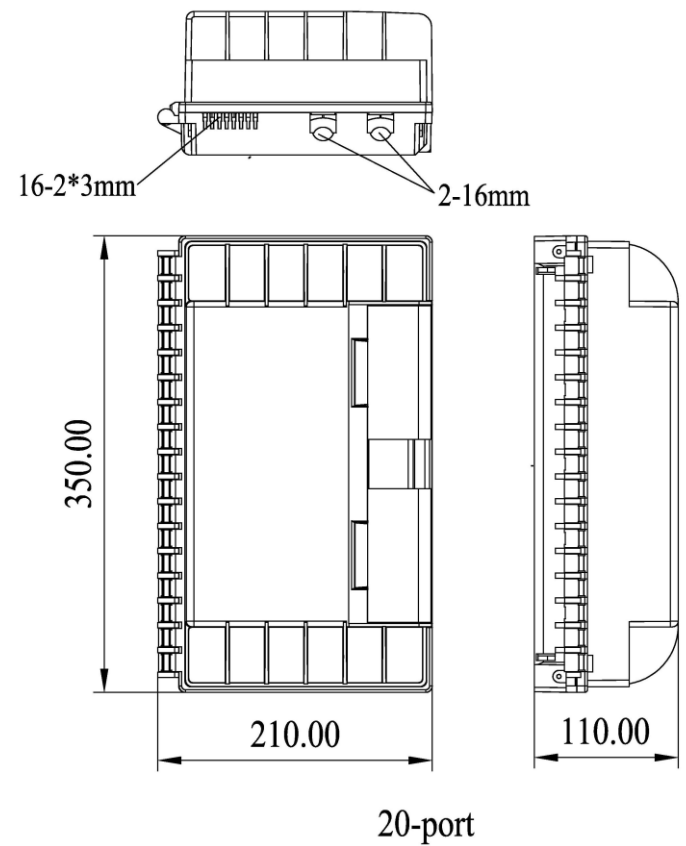
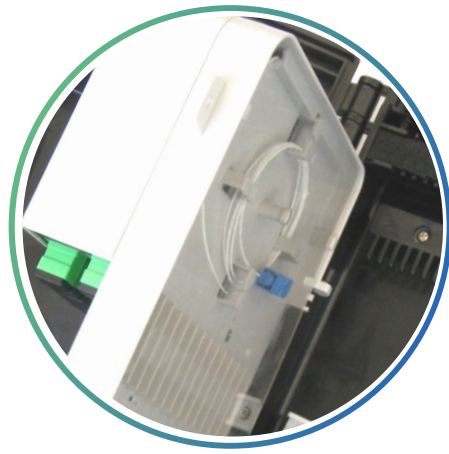
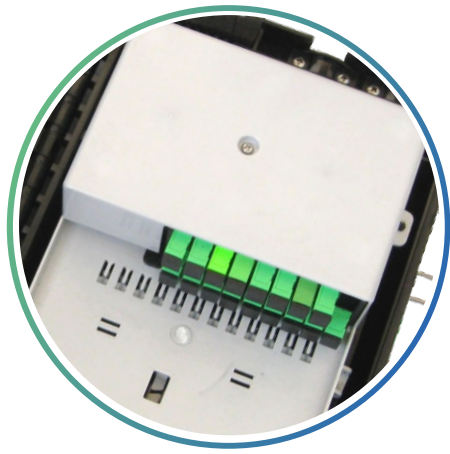


Excellent practicabilit

The shell of the joint box is made of modified PC engineering plastic, and the internal metal parts are made of 304 stainless steel material, which can meet the service life of more than 20 years (depending on the environment) with good impact and corrosion resistance characteristics.

If necessary, the box can also be equipped with a ground device for grounding the metal members inside the box.

GJS-III-2019 type fiber optic splice closure specifications



Product specifications	
Maximum capacity	48 cores
Capacity of each splice tray	24-48 core/tray
Maximum number of splice trays	max 1 pcs
Number of optical cable entrance and exit tubes	4 main cable ports, 16 drop cable ports

Ordering Guide | Accessories information



Product number
GJS-III-2019



Product size
350*210*110mm



Product weight
1.8kg



Qty/CTN
8 set



Inner carton size
390*220*120mm



Outer carton size
410*530*480mm

Standard accessories

1. Labeling paper		5. Nylon tie	
2. Installation tape		6. Desiccant	
3. Abrasive cloth		7. Seal tape	
4. Heat shrinkable protective sleeve		8. Hanging hook	


Optional accessories

1. Wall mounting kit		3. Adapter	
2. Buffer tube for bunchy fiber		4. Pigtail	

To the future together.

 www.ztong.com

 info@ztong.com

 Tel:86-0574-62498928

 Ningbo Zhantong Telecom Equipment Co.,Ltd.

 Fumin Industrial Zone,Moushan,Yuyao City,Zhejiang,China