

GP-148 Fiber Optic Splice Closure specifications

Version:1.0



View website



Download CN ver

GP-148 type fiber optic splice closure specifications

GP-148 type fiber optic splice closure is used in the terminal access link of FTTH optical fiber to the home access system. It is a device for protecting feeder optical cables and wireless optical cables in optical fiber transmission networks. It has the functions of optical fiber storage and bifurcated docking. the product's protection level reaches IP 54, and is suitable for outdoor wall-mounted installation. The maximum capacity 2core.3 cable ports and the convenient wireless optical cable can be led out to the top.



Reliable sealing

The fiber optic splice closure shell is sealed with EPDM sealing strips, and the optical cable inlet and outlet holes are sealed with silicone sealing rings. The head shell is sealed with buckles, which makes opening and installation more convenient, construction is faster, and the sealing performance of the product is better.



Modular design

The bottom box welding card slot adopts an integrated structural design, which can save more installation space and make construction simpler and more convenient. Supports coiled storage of optical fibers with loose tubes, and the bending radius of the optical fiber is greater than 40 mm.



Powerful Features

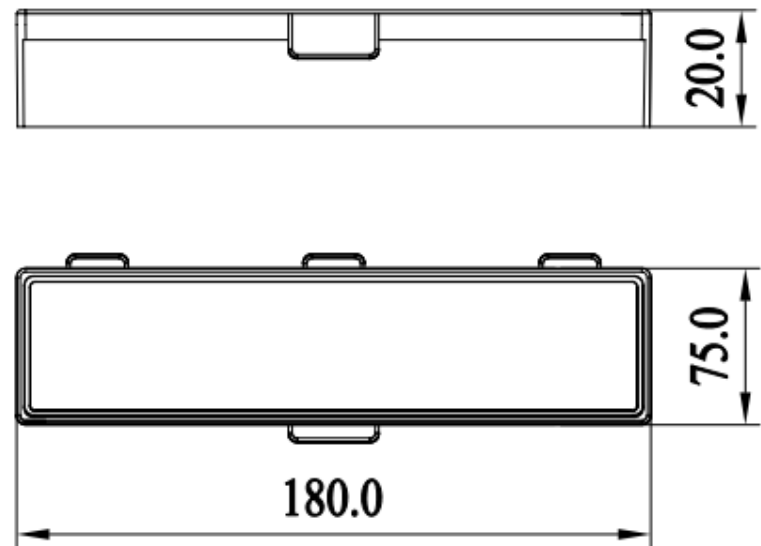
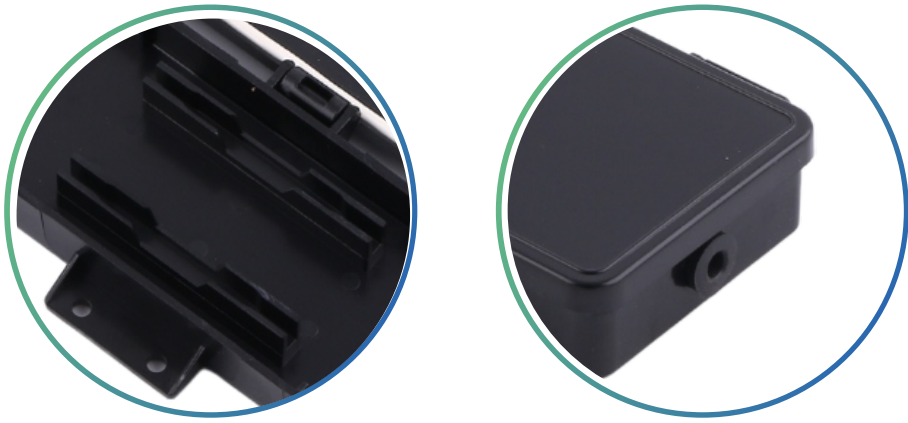
Supports the use of optical cables such as divergence and docking.

Supports overhead or wall-mounted installation.

Excellent practicabilit

The fiber optic splice closure shell is made of modified PC+ ABS material, and the internal metal parts are made of high-quality steel plate materials. It can have a service life of more than 20 years (depending on the environment) and has good impact resistance and corrosion resistance.

GP-148 type fiber optic splice closure specifications



Product specifications

Maximum capacity	2 cores
Capacity of each splice tray	core/tray
Maximum number of splice trays	max pcs
Number of optical cable entrance and exit tubes	3 main cable ports

Ordering Guide

Accessories information



Product number
GP-148



Product size
180*75*20mm



Product weight
0.093kg



Qty/CTN
100 set



Inner carton size
/



Outer carton size
380*210*470mm

Standard accessories

1. Nylon tie		3. Wall mounting kit	
2. Heat shrinkable protective sleeve			

To the future together.

 www.ztong.com

 info@ztong.com

 Tel:86-0574-62498928

 Ningbo Zhantong Telecom Equipment Co.,Ltd.

 Fumin Industrial Zone,Moushan,Yuyao City,Zhejiang,China