

# GP-114 Optical Fiber Distribution Box Specifications

Version:1.0



View website



Download CN ver

# GP-114 type fiber optic distribution box specifications

GP-114 type fiber optic distribution box is used in the terminal access link of FTTH optical fiber to the access system. It is an ideal supporting equipment for wiring between optical nodes and terminal equipment in optical fiber transmission networks. It has the ability to support optical fiber storage. It has the function of flexible scheduling of light splitting and wiring. The protection level of this product reaches IP55, and is suitable for outdoor pole and wall-mounted installation. You can install a miniature optical splitter as needed. The maximum capacity 48core, It has 4pcs input optical cable ports and 16pcs drop cable ports. Meantime, It can install an 16pcs SC adapter and use an optical fiber quick connector to lead out the fiber optic cable.



## Reliable sealing

The input and output cable ports are sealed with silicone sealing rings. The cable ports are tightened by the nut screws, the sealing performance will be better.

## Modular design

Optical fiber splicing trays and storage tray adopt a friendly modular structure design. The number of splicing trays can be increased or reduced according to capacity to meet the needs of different users. Supports coiled storage of optical fibers with loose tubes, and the bending radius of the optical fiber is greater than 30 mm.

## Powerful Features

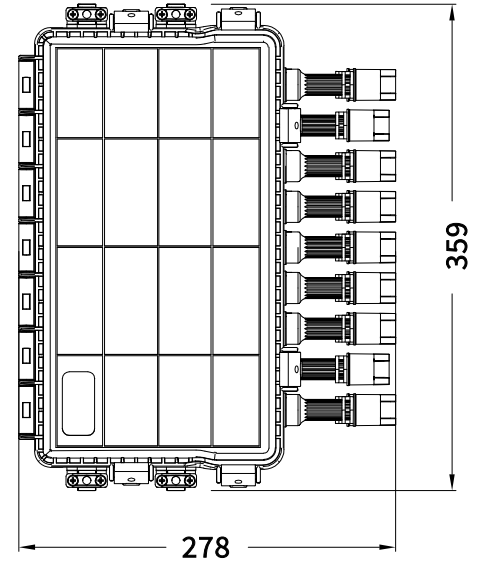
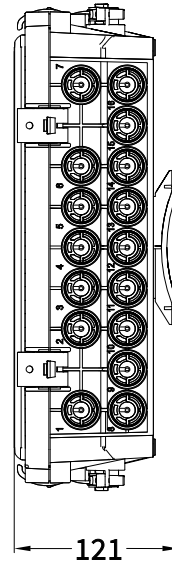
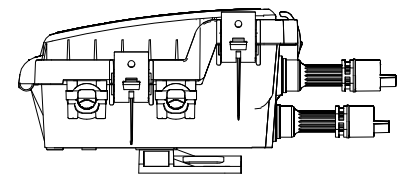
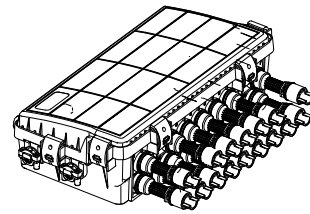
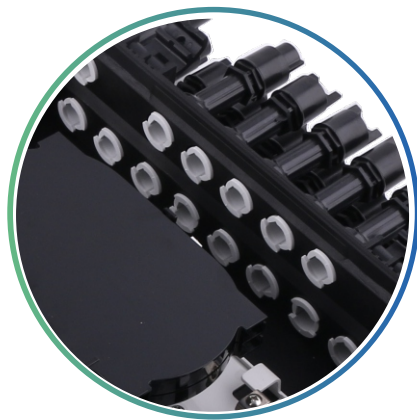
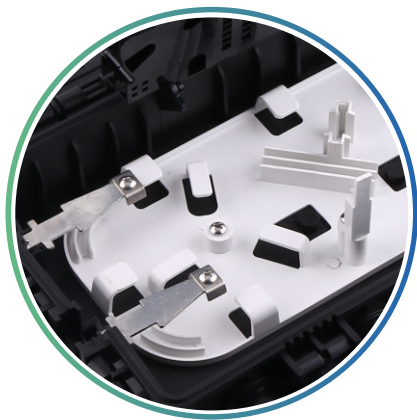
Supports splicing, splitting, wiring, branching, pass-through inventory of optical cables.

Supports wall-mounting and pole installation. Through the grounding device and grounding wire, the metal parts inside the distribution box are supported to be grounded.

## Excellent practicabilit

The fiber distribution box shell is made of modified PP+GF material, and the internal metal parts are made of high-quality steel plate materials. It can meet the service life of more than 20 years (depending on the environment), and has good impact resistance and resistance. Corrosion properties.

# GP-114 type fiber optic distribution box specifications



## Product specifications

Maximum capacity	48 cores
Capacity of each splice tray	24 core/tray
Maximum number of splice trays	max 2 pcs
Number of optical cable entrance and exit tubes	4 main cable ports ,16 drop cable ports

## Ordering Guide

## Accessories information



Product number  
GP-114



Product size  
359\*278\*121mm



Product weight  
1.56kg



Qty/CTN  
8 set



Inner carton size  
295\*120\*380mm



Outer carton size  
620\*400\*515mm

### Standard accessories

1.Nylon tie		7.Number paper	
2. Installation tape		8. Hose clamps	
3.Sandpaper		9.Special spanner	
4. Heat shrinkable protective sleeve		10.Wall mounting kit	
5.Rubber plug		11.Pole mounting kit	
6. Instructions			

# To the future together.

 [www.ztong.com](http://www.ztong.com)

 [info@ztong.com](mailto:info@ztong.com)

 Tel:86-0574-62498928

 Ningbo Zhantong Telecom Equipment Co.,Ltd.

 Fumin Industrial Zone,Moushan,Yuyao City,Zhejiang,China